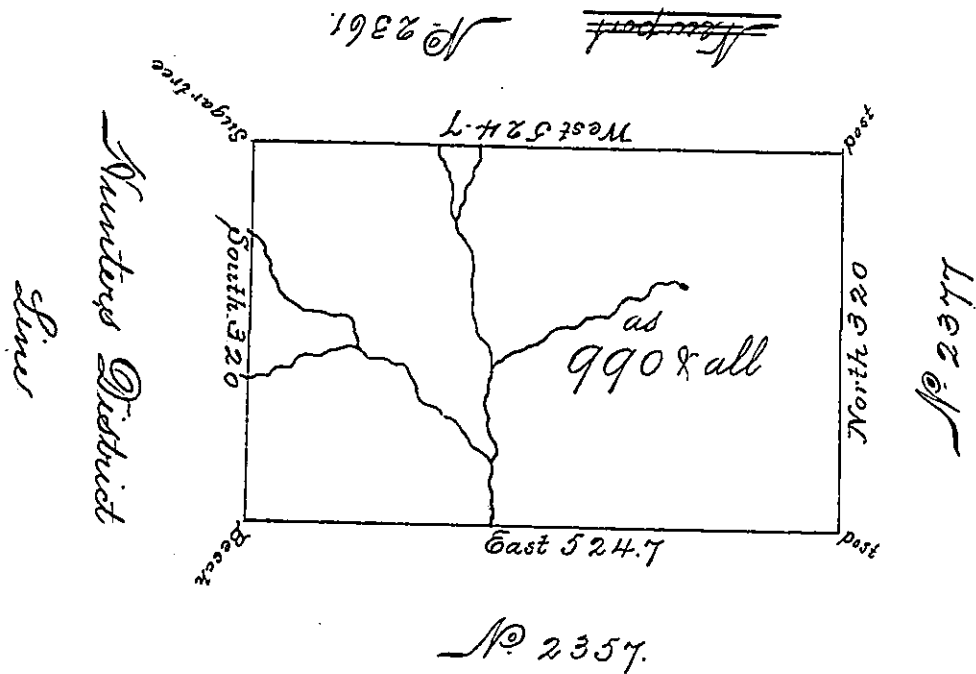


N: 2



Situate on the headwaters of the Left Hand Branch of
 Sinnamahoning Creek above the Driftwood and thirty
 three Miles South of the State Line in Northumberland
 County containing 990 Acres and the usual allowance for
 Roads &c. Surveyed July 27th 1793 for Wilhelm
 Willink Nicholas Van Staphorst Christiaan Van Eighen
 Hendrick Vollenhoven and Rutger Jan Schemmelpen-
 nench in pursuance of a Warrant No 2363 bearing date
 December 12th 1792

Daniel Broadhead, Esquire S. J. John Canan D. S.

IN TESTIMONY that the above is a copy of the original remaining on file in
 the Department of Internal Affairs of Pennsylvania, made
 conformably to an Act of Assembly approved the 16th day of
 February, 1833, I have hereunto set my Hand and caused
 the Seal of said Department to be affixed at Harrisburg,
 this Seventh day of March 1899.

James W. Latta
 Secretary of Internal Affairs.